

2016-2017 Annual Report



Central Lutheran
MINNEAPOLIS



Agenda

Central Lutheran Church Annual Meeting of the Congregation

June 21, 2017, 7:00 p.m.

AGENDA

David West, President

Call to Order

Opening Prayer

Approval of Agenda

Approval of Minutes

- June 26, 2016 Annual Meeting Minutes
- July 24, 2016 Special Meeting Minutes
- October 2, 2016 Special Meeting Minutes

President's Report

Rostered Leader's Reports

Pastors

Deacon

Central Lutheran Church Foundation Report

Ministry Area Reports

Information Items:

Building Renewal Task Force Report

Tree of Life Report

Action Items:

Treasurer's Report

2017-2018 Budget

Nominating Committee Report and Elections

Adoption of revised Constitution based on ELCA Model

Hymn

Election Results

Introduction of President David Sand

Prayer and Benediction

Adjournment



Minutes of 2016 Annual Meeting

Regular annual meeting of the congregation, June 26, 2016

The annual meeting of Central Lutheran Church was held on Sunday, June 26, 2016 after the 10:30 a.m. worship service. The Annual Report was available to Central members after worship the Sunday prior. It was also available online via the church's website and was distributed at the annual meeting.

Opening Prayer

The meeting began with an opening prayer led by Pastor Peter Nycklemoe.

Business Meeting

Declaring that a quorum was present, Congregation President Kevin Lile called the meeting to order at 11:35 a.m., and then highlighted the agenda for the annual meeting.

Approval of Agenda

A motion was made to approve the agenda as presented, seconded and approved.

Approval of Minutes – June 21, 2015 Annual Meeting Minutes

A motion to approve the minutes of the 2015 Annual Meeting was made, seconded and approved.

President's Report

Congregation President Kevin shared what an honor it was to serve as congregation president in the past year with an outstanding council, great staff and wonderful, faithful members. He thanked the congregation for their support. He shared his sense of renewed hope and enthusiasm, as well as the sense of clarity with the definition of mission and ministry—worship, formation, community and generosity. He also shared his thoughts about the faith formation leader search, Kairos and the capital campaign, the work of the Building Renewal Task Force, the Synodically Authorized Worshipping Community in the Downtown/North Loop/Guthrie area, and the upcoming anniversaries of the Reformation's 500th and Central's 100th. The congregation president's report can be found on page 8 of the annual report.

Pastors' Reports

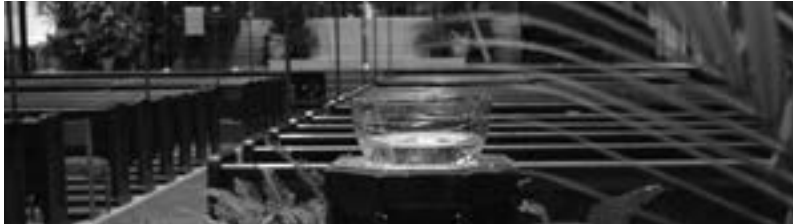
Pastor Melissa, Mark Sedio, AiM, Pastor C, and Pastor Peter each shared their thoughts and their gratitude for the past year. The Pastor's and Cantor's reports begin on page 9 of the annual report, as well as reports from the directors of communications, finance, facilities, and security.

Central Lutheran Church Foundation Report

Shirley Teig spoke for Bonnie Weisenburger, president of the Foundation, who was out of the country. Shirley highlighted the Foundation's report, found on page 16 of the annual report, emphasizing four areas: the search for a new development director, review of the duties and obligations of the board of trustees, the increase of the distribution rate to Central Lutheran Church from 4.50% to 4.75%, and the four new positions that joined the trustees in December 2016.

Action Items:

1. A motion was made by Hazel Reinhardt, chair of the Building Renewal Task Force and by direction of the Congregation Council:
"Resolved, that Central Lutheran Church adopt the design concept recommended by the Building Renewal Task Force that removes the structures known as the education building, the parish house and the south commons and replaces them with new construction to support Central's mission. The new construction will be in two phases, the scope of each phase and cost associated will be determined by the design and by the capital appeal. The final vote on design and budget recommendation will be at a called congregational meeting this autumn. The first phase for the new construction will likely be 20,000 – 30,000 square feet. The cost framework for the removal, maintenance needs and new construction for phase one will be in the range of \$8,000,000 - \$9,000,000 and will include fees and expenses."
Ballots were distributed and handed in for tallying, and the poll was closed. See below for results.
2. Treasurer's Report
Mark Forsberg first shared his thanks to Obie Holmen, director of finance, for all his work and stated that it was a year with a lot to be thankful for and all the ways that Central has been blessed. He then highlighted the financial reports, which covered the proposed budget 2016-2017, the 2015-2016 budget and the 2015-2016 actual amounts. Total revenue for 2015-16 received was \$2,687,855, 12% more than budgeted. Disbursements for 2015-16 totaled \$2,467,148, 3% more than budgeted. This left a surplus of \$220,708. Mark pointed out two things that resulted in this surplus for the year: 1) \$600,000 in estate bequests, half of which went into the operating fund and the other half into the designated fund for building; 2) parking income that was significantly less than budgeted.



2016 minutes continued

A motion was made, seconded and approved to accept the treasurer's report.

3. 2016-2017 Budget

Mark presented the 2016-2017 Proposed Budget, which reflects total revenue of \$2,509,850 and total disbursements of \$2,498,633, for a surplus of \$11,217. Mark emphasized that funds received from parking revenue generally covers Restoration Center expenses, funds received from the Foundation covers general maintenance and building expenses, and member giving, which supports everything else.

A motion was made, seconded and approved to accept the 2016-2017 budget.

4. Nominating Committee Report and Elections

Steve Studt, member of the Nominating Committee, submitted the nominations for: president-elect - David Sand; council at-large - Sara Stensaas, Franklin Dietrich, and Jim Hart; synod assembly voting members - Judy Mondloch, JoAnne Heintz, Brian McKinley and Dennie Moore.

President Kevin separated the nominations into two parts: a written ballot for president-elect and council at-large; and a voice vote for synod assembly voting members. For president-elect and council at-large, no further nominations came forward from the floor. Ballots were distributed and handed in for tallying, and the poll was closed. See below for results.

For synod assembly voting members, a motion was approved to accept the full slate of candidates.

Pat Hansen, representing the Congregation Council, submitted the nominations of: Audit Committee – Jim Heintz; Nominating Committee – Katie Brenke, Carney Bergeson-Meekins and Susan Troselius. No further nominations came forward from the floor. This nomination does not require written ballot; a motion was approved to accept the full slate of candidates.

Information Items:

1. Formation and Care Rostered Leader Search Team Report

Allison Eger, chair, shared the exciting news that a final candidate had been found. The congregation meeting for voting to call this candidate will take place in July. The committee, which included Dave Brenke, Simon Husbands, Darlene Hetland, Jane Eshleman, and Sara and Julie Stensaas, was thanked for their hard work. Pastor Peter shared that the funding of this position was just approved in the 2016-17 Budget. He also thanked Jeffrey Schulz and Marissa Sotos, interims, and the Personnel Committee for their work with this!

2. North Loop Development Initiative Report

Pastor Peter shared the exciting news about this synodically authorized mission start as approved by the Central Congregation Council, the ELCA, and the Minneapolis Area Synod Council. Pastor Marissa Sotos has been called by the synod, and will lead this mission start in the North Loop.

Announcement of Building Renewal Project Ballot Results

The building renewal project motion was passed by an overwhelming majority of 92%.

Announcement of Election Results

The council members were all elected.

Introduction of President Dave West

Before introducing Dave, Kevin acknowledged Hazel Reinhardt and Kathy Fiscus, who both served Central in a variety of leadership positions over the years and whose council terms were completed.

Kevin then introduced Dave West, new president, who thanked the members for entrusting him with the presidency of the council. He also expressed the honor it was to serve and to share this exciting time for Central, a time to look forward and follow where God is guiding us. He also thanked Kevin for his presidency over the past year and presented him with a gift.

Prayer and Benediction

The meeting was closed with a prayer by Pastor C and a benediction by Pastor Melissa.

Adjournment

President Dave adjourned the meeting at 12:45 p.m.

Respectfully submitted, Pat Hansen, secretary



Special Meeting July 24, 2016

Special Congregational Meeting, July 24, 2016

Declaring that a quorum was present, Congregation President Dave West opened the meeting at 9:45 a.m. Pastor Peter Nycklemoe led the invocation.

President Dave indicated that there was only one agenda item for this meeting. The purpose of this meeting was to vote on extending a call for pastor for formation and care to Stephanie Friesen.

Allison Eger, chair of the call committee, shared a report about this eight-month process. The committee reviewed 17 leader profiles and conducted six interviews. Besides meeting with the call committee, the candidate also met with Prs. Peter, C and Melissa, and was unanimously endorsed by the Congregation Council after meeting with them.

Allison also presented the committee, Dave Brenke, Simon Husbands, Darlene Hetland, Jane Eshleman, and Sara and Julie Stensaas, and thanked them for their work.

Discussion followed. A few questions were raised with comments shared and answered.

President Dave, on behalf of the Congregation Council, read the following resolution:

“Be it resolved, that Central Lutheran Church call Stephanie Friesen to serve as associate pastor for formation and care; that the compensation be within the synod guidelines and within the budget adopted at the annual meeting on June 28, 2016.”

Being a resolution from Congregation Council, no second was needed. There were no further questions or discussion.

A voice vote was taken with the resolution being unanimously approved.

President Dave adjourned the meeting at 10:00 a.m.

Respectfully submitted,
Pat Hansen, secretary



Special Meeting October 2, 2016

Special Congregational Meeting, October 2, 2016

Congregational President-Elect David Sand called the meeting to order at 11:45 a.m. President David West was out of town on a family matter. President-Elect David also declared a quorum.

Pastor Peter Nycklemoe thanked Karl Starr, Christopher Haug and crew for the nourishment provided. He then opened the meeting with prayer.

Hazel Reinhardt, chair of the Building Renewal Task Force, began by thanking the members of the Building Renewal Task Force—Kari Lile, Ron Fiscus, Franklin Dietrich, Paul Troselius, Pastor Peter, Pastor C, Pastor Melissa, and Dave Rodriguez. Hazel gave a short overview of the building renewal process—the timeline, the objectives and the work that went into this process. She reminded everyone that the congregation voted at its annual meeting on June 26, 2016 to remove the education building, the parish house and the south commons and replace them with new construction to support Central's mission. She talked about the cost framework and Central's financial capacity of \$8,000,000 - \$9,500,000, with the response of a strong capital appeal.

Obie Holmen, director of finance, shared the good news of Central's current financial position being in historically good shape and the fact that Central can afford a \$5,000,000 - \$6,500,000 mortgage, giving examples of how that can be done. He shared that Central is in a good position to secure favorable financing.

Daniel Kodet, representing Kodet Architectural Group, Ltd., presented the latest building design concepts.

President-Elect David, on behalf of the Congregation Council, read the following resolution:

“RESOLVED, that Central Lutheran Church empower the Congregation Council to secure financing at favorable rates and terms, not to exceed \$9,500,000, to cover the costs for the Building Renewal Project, including all building costs and fees for Kodet Architect, Kairos consultants and other vendors;
BE IT FURTHER RESOLVED, that Central Lutheran Church launch a Capital Appeal on October 29-30, 2016, with an in-gathering on November 19-20, 2016, with the goal for Central as a community of faith to pledge at least \$3,000,000 over three years for the project, with the anticipation of a second appeal to follow in the autumn of 2019;
BE IT FURTHER RESOLVED, that Central Lutheran Church affirm the phase one design concepts presented today, recommended by the Building Renewal Task Force and with the unanimous endorsement of the Congregation Council, that removes the structures known as the education building, the parish house and the south commons and replaces them with new construction to support Central Lutheran Church's life and mission. The budget for phase one will be in the range of \$9,000,000 - \$10,000,000 depending on the response of the capital appeal, and will include fees and expenses.”

A motion was made to approve the resolution. Being a resolution from Congregation Council, no second to the motion was needed. Numerous questions with discussion followed. Ballots were handed in for tallying, and the poll was closed.

The resolution was passed with a 93% approval, including 241 yes, and 19 no.

Pastor C led the congregation in the Lord's Prayer and Blessing.

With a motion, second and approval, President-Elect Dave Sand adjourned the meeting at 1:00 p.m.

Respectfully submitted,
Pat Hansen, secretary



Congregation President Report

One of the tasks of the president of the congregation is to speak to the new member class after they are received by the congregation to learn about life at Central. While my topic, church governance, wasn't the most exciting, I enjoyed participating in these programs because it provided the opportunity to reflect upon our mission and the Council's role in advancing it.

As we discussed with the new members, this past year we continued to live our congregational mission statement, exploring the promise of God for all, in a pattern of discipleship consisting of four mission area clusters. This pattern is further rooted in a core text from the book of Acts, chapter 2. This text has been explored throughout the year at Bible studies and Council meetings.

While the Acts verses are replete with a variety of symbolism and meaning, one theme that has stayed with me are the two references to baptism. Water is frequently encountered in Christianity and in the Bible. It is used to symbolize an assortment of things, including death, rebirth, the presence of God, social justice, cleansing and God's blessing. Water makes an appearance in both Genesis and Revelations. My parents are from New England, and growing up I spent countless days in, on or around the ocean. Perhaps that's why I have always been drawn to baptism and the water imagery in the Bible, and why during my term as president, it has been a guiding theme for me. In chapter 35 of Isaiah it's written "...for in the wilderness shall waters break out, and streams in the desert. And the parched ground shall become a pool, and the thirsty land springs of water. When I began my term as president of the congregation, one of my hopes was that, like the water in Isaiah, your leaders would be an instrument of renewal as we continue our journey together.

In the past, Pastor Peter has used the analogy of the faith journey and mission work of Central's congregation as boarding a ship and heading out to where God is calling us. In the analogy, over the past 20 years, we have prepared for our journey and boarded the ship several times. Each time, however, our well known issues with senior pastors have resulted in our ship never leaving the port, and the congregation having to disembark and start the preparations all over again.

Central accomplished much this past year that has led us back onto our ship. Most significantly, of course, was the decision to shed our obsolete education wing and parish house, and replace them with a mission-forward space, and the associated successful capital campaign that was necessary to accomplish this building renewal. The congregation voted overwhelmingly in favor of the decision and to exceed the campaign goal was truly amazing—once again demonstrating the commitment of

Central's members. We are truly living Jesus' teaching of not putting new wine into old wineskins. To set sail to find where God is calling us, these actions represent a strong pushing off from the dock and firing up of the ship's engines.

While the importance of the Building Renewal Project cannot be understated, many other significant activities took place this past year in the life of Central that reflect the Spirit pouring over us. Some of the highlights sprinkled throughout the year were the following:

- We called Pastor Stephanie as the pastor for formation and care
- We received 69 new members to Central
- Over 700 people regularly worshiped each week at our four worship services
- We fed an average of 250 people each week at our Monday meal
- Attendance at the Easter Vigil service grew for the third year in a row (despite the symbolic rain that fell)
- Four impressive young men made a public affirmation of their baptism in their confirmation in May
- 38 children registered for Sunday School, 21 registered for confirmation class, and eight high school students regularly gathered with Larye Pohlman
- The newly formed young adults group was a deep well of fellowship
- Tree of Life, the new Synodically Authorized Worshipping Community in the North Loop led by Pastor Marissa Sotos held its first worship service
- We baptized 11 children
- We were one of the three venues hosting the performances for the prestigious American Choral Directors Association national conference
- Our capital campaign included a pledge of pennies from a Restoration Center member who doesn't know if tomorrow he will have enough to eat or place to sleep.

There were many other recurring and one-time doings flowing from the daily life of Central that reflect our pastors, staff, volunteers and members living a life of grace, and that demonstrate to me that we don't need to dwell in the past, for God is at work in this place right now. In the cleansing waters of our baptism we are bestowed an identity of children of God, and we receive the gift of the Holy Spirit and abundant life. Neither our past history nor present doubts can alter that. After having the privilege of serving as your congregation president, I believe that our journey of exploration of God's promise, and to discover where God is calling us, continues full steam ahead.

Dave West



Pastor Peter Nycklemoe

What is This Place?

What Is This Place is a wonderful hymn. We will sing it as part of our annual meeting. When we were brainstorming hymn ideas at the worship staff meeting, Jane Lien in one of her typically brilliant moments suggested it. As we look to this summer and the beginning of the Building Renewal Project, we might be tempted to change the song's first verse word order a bit to, "what is this place, where are we meeting?"

We embark on an adventure this summer. We know we are the body of Christ and that the church is not about buildings, the church is about people equipped and sent out in ministry and mission. Yet buildings are where people gather. Buildings do seem to hold the energy of the past, the memories of joy and sorrow. As we embark on this journey, we need to acknowledge that even as the Building Renewal Project is essential for the future of Central's mission it is also hard to say farewell to these buildings. That is why we have paused to offer time to say farewell by visiting various part of the building on June 10-11 and as a part of the annual meeting on June 21. That is why we will also offer prayers of thanksgiving and requests for healing as a part of the groundbreaking once that date is set. You may feel many emotions as we prepare to remove the south commons, education wing and parish house. Know that all those emotions are honored and that God is at work in all that you may feel and experience.

We explore the promise of God for all. We spent quite a bit of time in cottage meetings, open meetings and conversations around the word "promise" in the late-winter and spring of 2015. As we listened for God's call, the word promise stayed with us and is the center of our current mission statement: exploring the promise of God for all. So too, we spent quite a bit of time on the word "exploring." We talked about other options, like sharing the promise, but we needed a word with a bit of risk. Exploring embodies some risk. When we explore, we surrender what we know and what is familiar and depart into new territory, into new experiences. The hymn, *What Is This Place*, gives us hope for our exploring: "names for our God, dreams, signs and wonders sent from the past are all we need. We in this place remember and speak again what we have heard: God's free redeeming word." The promise of God's love has been remembered and spoken and will be remembered and spoken even as buildings change.

We are the church, together. We are the church, the body of Christ. The hymn inspires me: *Here in this world, dying and living, we are each other's bread and wine. This is the place where we can receive what we need to increase: our justice and God's peace.*

Thank you to all the amazing leaders here in the congregation, for their faithfulness and love for this mission. Thank you to my colleagues, for our shared staff life as we seek to equip and celebrate every member of the body of Christ. Thank you to you, for all the ways you respond to God's call to be a member of the body of Christ, and so share your gifts and love.

Thank you for the privilege to serve as one of your pastors. It is an amazing time to be the body of Christ here in this moment, as Central Lutheran Church. God has called us to explore the promise for all and we will continue to do so in all of the challenges and opportunities of this next year, and beyond.

Yours in Christ Jesus,
Pastor Peter



Pastor D. Foy Christopherson

In our worship life the highlight of the year has to have been the Great Vigil of Easter and the days that surrounded it. Now fully established and deeply loved, its presence as the centerpiece of our worship life completes a long process of transition begun more than a decade ago in drawing our worship life into more ancient patterns that are creatively observed for our day. Our worship life is also now more deeply aligned with the patterns outlined in the ELW, and LBW before it, that keep us on the cutting edge of liturgical practice. For some reason people watch what Central does, and I'm thrilled we are modeling these ancient and-at-the-same-time emerging trends in worship. Our great worship lay leaders, worship staff and my brilliant colleagues, Cantor Mark, Cantor Jane and our other pastors all make this happen week in and week out.

And now we have the Great Three Days in our repertoire and in our bones. That's great as we move into these transformational days before us. People who have practiced change ritually, can do it architecturally and organizationally. Our core liturgical narrative of being on a journey with God, of life coming from loss, of reconciliation, of being sent out as community, will serve us well as it has served God's people before us.

We will embody that narrative in the year to come. We will also continue to live into the cycle or rotation of our mission area clusters which get more inspiring for me month by month. Other highlights of the year include a large number of successful public events, a great WorshipLife Team, and an upgraded sanctuary sound system. I was invited to write the Lent chapter in the ELCA Sundays and Seasons worship planning guide for this year. Challenges included the many deaths/funerals this year, more than average. I miss these members deeply. And we continue to struggle to find a midweek prayer pattern for Lent and other seasons that works for our diverse, metropolitan congregation. Our WelcomeLife hospitality ministry is due for some re-imagining but we'll need to live in the chaos of the building project with that and re-imagine it when we get into the new facility since welcome is so tied to architecture and so much of our past work was welcoming in the midst of the obstacles of the old building.

We have been blessed for the past two years by the presence of Lydia Svendsen and Katherine Albin, Christian Public Leader students from Luther Seminary. As part of this two year program Lydia and Katherine have served in our midst in many creative ways sharing their great gifts for ministry with us. Katherine graduated this year with a M.A. in Children, Youth and Family Ministry. Lydia continues her studies on her way to a M.Div. and ministry as a pastor. We are thankful for the gift they have been in our congregation.

Finally, I must say how much I appreciate and depend upon the superb staff we have serving in the worship area cluster. Michael Dee's attentiveness to the needs and many details of our worship life undergirds all that we do. His experience as a musician, youth choir director and church/cemetery worker make him deeply valuable. Mark Kieffer and Jeffrey Schulz bring deep theological formation and experience to their work each day. To that we benefit from their professional expertise as an administrator in Jeffrey's case; and as a theatre professional and liturgy director in Mark's case. We simply could not accomplish all that we do without them.

June 2017 marks 11 years that we have served together as a missionary outpost for God's kingdom at the corner of 12th and Third. That's 40% of my ministry and 11% of your ministry. My call in this place continues to be exciting and challenging in the best sense of those words. We have turned some major corners this year and I am thrilled to be part of the work you are doing now and in preparation for the future. With the Reformation500 observance and our 100th anniversary and the renewed facility all on the horizon it has felt like we have been doing exciting preparation work this past year.

Respectfully submitted,
Pastor C



Pastor Melissa Pohlman

It is such a blessing to be one of your pastors at Central. When folks ask me what it's like I tell them, "It's never boring!" This year has lived up to my description, over and over again. Some of the highlights include:

Changing the way we do resource assistance so that it is part of a collaborative program with the Downtown Congregations to End Homelessness that helps prevent people from becoming homeless by paying their back rent and connecting them more deeply to our community at Central. Emergency Rental Assistance has kept almost 100 families in their homes during the six month pilot program. The people who receive emergency rental assistance serve in the Free Store, through all the meals we serve at Central, and in many other capacities. This integration of people serving and people receiving services has changed the tenor and effectiveness of all of our ministries. I cannot begin to tell you the ways lives are being changed through this service and assistance. We are working to find the resources needed to support the program's staffing needs.

Street Voices of Change began meeting in September of 2016. We had heard from people experiencing homelessness that they missed having a place where they could gather and share their experiences. The group began with nine people who quickly took leadership and found a voice and now every Thursday morning we have about 70 people who gather for breakfast and to organize in order to address the conditions of the shelters and their experience of being on the streets. They have met with the captains of the Salvation Army Harbor Lights and with the directors of the Office to End Homelessness in Hennepin County. Keep an eye on this part of our ministry over the next year as together with our other folks doing advocacy, they will offer an opportunity for week-long community organizing training.

The Central Creation Cares Team and the Heading Home Central Team joined forces this year to host the Trinity Institute: Water Justice. We gathered over three days to learn more about the ways that our faith calls us to protect our most fragile resource: fresh water. We heard from nationally known speakers and engaged in small group discussions that helped us open our minds to others and their experiences and pushed us to take action in our own communities.

As we enter the month of June we are coming to the culmination of everything we have spent this year preparing for: our big move and construction to begin! The triple-wide trailer is parked and assembled on the south end of our parking lot and the Free Store has been lovingly packed by our volunteers. On average, we see 325 people come through the Free Store on any given week so we

will learn how to serve our folks anew as we wait to move into our new space. The same is true of the Monday meal, worship service and Bible study. We won't move until a bit later this summer, and we will not move into a trailer, but we will move into the sanctuary by August. A great deal of planning and preparation has been done in this year while we have continued to have (and cook and serve) lunch with 250 people each week on average.

All of this ministry and work and programs are grounded in our understanding of who Christ has called us to be at Central Lutheran. We see Jesus daily as people come in looking for food and a listening ear and a bit of hope. We see Jesus daily as folks share with us their amazing gifts of kindness and passion and push us to walk alongside of them in order to usher in the Kingdom of God on earth. In the middle of it all, I am blessed to be one of your pastors in this place at this time. I am blessed to do this work with the rest of the amazing pastors and staff (especially the security and kitchen folks) and volunteers and guests. I love every exciting moment of it.

Thank you,
Pastor Melissa



Pastor Stephanie Friesen

Last August at the church picnic, Milo Johnson—one of our eighth grade students—wound up and hurled a softball that triggered a lever dropping me into an ice-cold bath in a large red dunk tank. When I stepped out of the barrel soaked to the skin, Elliott Hagen giggled and said, “Now you look like the pastor I recognize. Now you look like the pastor I remember from camp.”

It’s been a remarkable year for me as your pastor of formation and care. As I think back to my first days and weeks with you, I’m reminded of a van full of students driving to Camp Amnicon, my plunge into the dunk tank, learning names and faces of children and their families as we launched Sunday school. I recall the day I was ordained and the day I was installed and I am thankful every day that God called me here—to Central Lutheran – to live and learn and serve alongside each of you.

Some of this year’s highlights included:

- A spirit-filled year in Sunday school, confirmation and high school ministry including a wonderful Christmas program, retreats to Camp Amnicon, Camp Wapo and Camp Chi Rho. The Sunday school children participated in the building campaign and together raised \$950 by bringing their coins to church each week. They are excited about and invested in our new space!
- We formed a new young adult group that meets monthly. They gather for learning and connecting in a variety of ways both here at church and out in the community.
- Our cradle roll families are gathering quarterly—getting to know one another and connecting as families. They come together for food and fellowship and often worship following their time together on Saturday nights.
- Learning and enrichment continues throughout the week. We host Sunday morning forums, and Bible studies on Mondays and Wednesdays. Groups of moms and dads meet monthly as do many of our families on Sacred Second Saturdays.
- We formed a Caregivers’ Support Group for members caring for a loved one with dementia, Parkinson’s and other chronic illnesses.
- Pastoral care is an ongoing ministry which takes each of the pastors out every week to visit our members in their homes, in hospitals, in care facilities and group homes. We bring communion and prayers and words of comfort from Central to our members who often can’t get to church.

And, in addition to these weekly and monthly ministries, it is a great joy to work alongside a team of pastors and staff

who continue to help me learn what it means to be a pastor in the Minneapolis Area Synod and in the greater church. I am blessed by their wisdom, their generosity and their willingness to welcome and encourage me as I navigate my first call.

As I look ahead, I am excited about so many things. What excites me about the work of ministry is captured in Paul’s letter to the Ephesians when he writes that our gifts are to be used, “to equip the saints for the work of ministry, for building up the body of Christ.” We do this work together by entering into meaningful relationships with one another and gaining understanding about all the ways God calls us to be connected. Looking ahead, I imagine:

- Growing our Caring Callers Ministry by training and sending members to connect and visit with our homebound members and friends.
- Engaging caring adults to mentor our confirmation students allowing them to learn from each other.
- Developing a Milestone Ministry to help our families and students celebrate the important moments in their faith journeys.
- Creating a paradigm in Children, Youth and Family Ministry that fosters integration of our middle and high school students with our children.

So, as I close in on my first full year here at Central, I am grateful to Milo for his strong arm and accurate aim. He dropped me into that icy-cold bath which has served as a poignant metaphor for me. The plunge into the dunk tank captures the way I feel on many days when I close my door to go home. Plunging into that barrel shocked me, surprised me and assured me that God has called me to an amazing place.

Peace always,
Pastor Stephanie



Cantor Mark Sedio

It is fitting that, as we move more deeply into this festival year marking the 500th anniversary of Luther's Reformation, in which music played such an important role, we take a tally of the amazing number of musical offerings and events that have taken place in our sanctuary since last June. Here are some highlights:

- Presentation by Central Choir and soloists plus members of the Metropolitan Symphony of Bach's Cantata 196 "Der Herr denket an uns" on Sunday, November 13.
- Central Choir singing for midweek Lenten service at St. James African Methodist Episcopal Church on Wednesday, March 15. Our participation fulfilled an ELCA recommendation/effort to expand our interaction with diverse congregations in our area. St. James is the Minneapolis "mother" church related to the Charleston, S.C. Mother Emmanuel congregation that experienced the shootings in 2015.
- Presentation of Toivo Kuula's "Stabat Mater" at a service of music, word and prayer on Palm Sunday, April 9. This was an American premier of a work that I was exposed to on my last sabbatical in Finland in 2011. A masterpiece for choir and full orchestra (members of the Metropolitan Symphony Orchestra)—possibly one of the most difficult works the Central Choir has ever undertaken. Orchestral scores were created for us by Edition Tilli of Helsinki in commemoration of the forthcoming centenary of the composer's death. Organist Stephen Hamilton enhanced the service with his offering of Oskar Merikanto's Passacaglia (another work not widely performed in the United States). The Augsburg Choir also participated with three anthems.
- Central served as one of the two main venues for the national convention of the American Choral Directors Association. Three thousand people attended the convention. Fourteen different concerts were presented in our sanctuary. As a longtime member of ACDA—having attended several district and national conferences—I can say we outshone them all. Numerous people raved about our space, our hospitality, our friendliness (actually pretty unusual for these events). Bravo and thanks to all those who helped make it such a success—specifically to Jeffrey Schulz (events coordinator), Mark Kieffer (sound/lighting/overall guru) and Pastor C and the great number of hosts Central provided.
- Central hosted a concert by the Naantali Chamber Choir (Finland) as a part of Finland100 celebration on Thursday, June 8. Finland100 is the international celebration arts celebration marking Finland's centenary as an independent state.

Regarding the day to day, month-to-month workings of music and worship here at Central the following are of note:

- We have 75 singers on the roster in the Central Choir.
- I was both honored and completely surprised when, in early July, I was called to a meeting at Augsburg College and presented with the possibility of taking on the task of conducting the Augsburg Choir for the 2016-2017 academic year. Following conversations with Pastor Peter regarding feasibility (rehearsals take place Mondays, Wednesdays and Fridays from 4:30 to 6:00 p.m., fitting nicely into my work schedule here at Central) I decided to take on the venture—which has proven to be rewarding—both personally and for Central. This reinforces our connection to Augsburg College in many ways (not only, for example, our choral scholars program, but also the fact that other students simply come and sing). Because things have gone very well I agreed to serve as conductor for the 2017-2018 year as well during which a national search for a permanent conductor (not ME!) will take place.
- My thanks to Susan Troselius (soprano), Rochelle Milbrath (alto), Philip Rossin (tenor) and Ben Mulligan (bass) who have served us well as soloists and section leaders.
- Heartfelt thanks to Jane Lien for her outstanding work as associate cantor including playing for worship, accompanying the Central Choir, organizing special music schedules, overseeing the music library, leading the Choristers (children's choir), the handbell choir (exceedingly great work here!) and the Silver Bells.
- Thanks to our many instrumentalist "regulars" including Talia Mailman (harp), Nick Mordal (guitar), Hannah Peterson Green (flute), Polly Henderson (flute), and to jazz pianist Cheri Sykes who has played monthly for our Saturday evening services.
- We will continue our Choral Scholars Program and thank Nick Mordal, Sam Greives, Chris Wallace, Trevor Schaeffer, Sophie Bauer and Reid Henderson who all sang with us this year.
- Thanks also to Luther Seminary student Katherine Albin for assisting with many musical tasks here and there!

It's hard for me to believe that I'm now completing my 16th year here at Central—and I still absolutely love my work in this blessed place. Thanks to all of you for your support.

Soli Deo Gloria!
Mark Sedio



Obie Holmen

Director of Finance

These are exciting—and hectic—days around Central. Technicians are busy installing cables and speakers in the sanctuary and removing stained glass for storage. I have stripped my office walls of photos and diplomas, delivered reams of old papers to the shredding bins in the south commons, and communicated with various third parties to arrange for the next phase, a transitional step in our shared life in which the old is gone but the new has not yet arrived. By the time you read this, staff will have relocated to temporary offices on nearby Marquette Avenue, Comcast will have installed temporary internet access, our computers will have moved to cloud-based data storage, and our old analog phones replaced by a VOIP telephone system. Automated parking equipment awaits installation and implementation when the time comes.

Financially, Central is well-prepared to move forward. Once again, our operating budget has ended the year with a surplus. Our reserve savings account has grown. Building renewal pledges surpassed our goal, and the contributions are coming in ahead of schedule which has allowed us to fund initial building renewal expenses without drawing upon our line of credit. The Foundation has pledged generous support. Financial institutions are anxious to be our lending partner.

A budget for the coming year has been prepared and will be presented for approval at the annual meeting. The personnel figures reflect cost of living increases, and the compensation for each member of the staff is now consistent with synod guidelines and/or market conditions. Although the budget is balanced, we are presented with unique uncertainties during this transitional period. For example, after more than half of our building is demolished, utility costs will be reduced but by how much?

This transitional phase will present challenges, to be sure. Temporary offices, triple-wide trailer in the parking lot for the free store and health commons, and greater use of the basement under the sanctuary will place strains on staff and services. For good reason, Pastor Peter repeatedly stresses flexibility as we grow into the new, but our experience of the process thus far has demonstrated that each challenge has revealed new opportunity.

It has been my great honor to serve Central during these exciting times, and I am greatly appreciative of the support and affirmation I receive. As we reflect upon our history and honor our legacy, we can all be proud that together we are writing our own chapter that future generations will remember with gratitude.



Dave Rodriguez

Director of Facilities

Our past year together has definitely been a busy one. As we continue the preparations for the Building Renewal Project as well as keep up with our day-to-day goings on, I sometimes feel as if I am taking care of two separate buildings. One, the existing building we have always known, with all the memories of Sunday school classes, fellowship time, community meals, heated discussions, and a place of belonging. The other, a building my team and I have struggled to keep afloat, through roof leaks, HVAC break downs, accessibility challenges, and the many random water leaks. As this project continues, for me it will be like saying goodbye to an old friend and preparing for the arrival of a new one.

I am reminded of a conversation I had with one of our members on a Sunday morning last summer while we were out on the north plaza during fellowship time. He was commenting on how, when he was a little boy, he remembered seeing the education building being built, and enjoying the good times he had experienced in it. I couldn't help thinking that now a new generation gets to experience that same thing with the new building and, maybe, many years from now one of today's Sunday schoolers will be telling a similar story about how they saw this building being constructed and talk about the connection and wonderful memories they have with the new building.

This conversation helps me remember that all the hard work, late meetings, and tough decisions we are facing are

all a part of how we are constructing a new space that will secure the next page in the future of our church. So, as my team and I head into this project with a full head of steam, we will be keeping the memories of the past with us as we look to the future to see how our ministry can continue the important work for all the people of our community.

My maintenance staff and I are truly blessed to be working hand-in-hand with all the volunteer ministry teams, such as the Maintenance and Custodial Support Team, our incredible Garden Ministry Team, our docents, and all our amazing folks who continue to spring into action to help us out. I cannot say thank you enough, but I will keep trying. THANK YOU! I would also like to take this opportunity to say thank you to my staff. Challenge after challenge you never fail to rise up and do any and everything needed to accomplish whatever needs to be done.

Without a doubt, this upcoming year will bring us new challenges and obstacles to overcome. The road will certainly be a difficult one, but if we keep in mind that what we are constructing is more than a building and that instead, we are setting the foundation for all the good times, beloved memories and, the very future of what Central Lutheran Church will be for generations to come, I am confident that we will be able to overcome those challenges together. With this in mind, my staff and I continue to be here, doing whatever it takes for the future.



Dwayne Wright

Director of Security

As I reflected back to 14 years ago, I came through Central's doors as a temporary employee through a security company. Now I am going into my 11th year as a full-time staff member. In many ways I felt this past year was one of the best I personally have experienced at Central. Under the leadership of Pastor Peter, Pastor C, Pastor Melissa, and also Pastor Stephanie, the staff feels like one big happy family. It is a privilege and I am blessed to be a part of the Central family.

I would like to thank and recognize my staff for their hard work and challenges that they face every day, to make sure everyone feels safe and welcome. And their flexibility with the various shifts has been so appreciated. I would also like to thank Paul Troselius and Michael Dee for helping out with events and when we are shorthanded.

A few things have happened this past year, some of the big highlights include new uniforms for the security staff, and CPR and AED training.

As we begin this new program year, my team and I prepare for the challenges this year will bring us. But as always, my team will be here to insure the safety and security for us all.



Mark Carroll

Food Service Director

Last year was a good and busy one in the kitchen. With the help of Betsi Sample and Nate Hal, we were able to do more events. Financially, I believe we had a good year and are in the black.

Thanks to all the volunteers. These includes: the Monday crew, the funeral group, the Sunday volunteers, the birthday gals and all of the volunteers for special events. We could not have done our jobs as well without them. They are invaluable.

By way of information, Central Lutheran served an average of 250 to 300 meals throughout the year to the community on Monday noon. Last year, Central members drank more than 1,560 pounds of coffee.

Moving forward we look toward our new space. We are in the process of reviewing what equipment we will need

in the new kitchen and what things we will bid a fond farewell. Some of the items going to the new kitchen are: the coffee machine, convection ovens, two door stand up freezer, ice maker, alto-sham, pots, pans, cooking utensils, mixer, the two newest cabinets, racks, funeral and regular dishes, cups and glasses.

During the time that the church is under construction, Betsi Sample and I will coordinate meals for the Monday meal, Thursday breakfast for Street Voices of Change, funerals and special events. We look forward to the challenge. We are not sure what the new year will bring, but we look forward to a positive change in the new kitchen.

We wish all of you God's blessings!
Mark



Sara Masters

Director of Communications

My second annual report brings me full circle in my first full program year. I am so blessed to be here among you all. My daughter, Maren, and I joined Central earlier this year and we are so happy to have a new church home. Maren has fit in nicely with the confirmation group and is looking forward to the trip to Camp Amnicon this summer.

This past year was a blur. There was so much to communicate and so many ways to do so. Some of my highlights of the past year:

- Launched a new website.
- Worked on the capital appeal.
- Worked on the implementation of the new outdoor sign.
- Produced four issues of *Centering*, our new quarterly newsletter that is mailed to homes.
- Produced the weekly *Spirit* and *eSpirit* along with a Tuesday eDevo that is emailed.
- Pictures, pictures and more pictures were taken. I have been taking pictures to use in all our publications and have hired a photographer to capture the beauty of this place. Thanks to all of you who send me great pictures periodically to use.

- I joined the Central Choir.
- I have been assistant minister from time-to-time

I look forward to the coming year. It will be a year full of changes and new adventures. Much of my work will focus on communicating the progress of the Building Renewal Project. I will be focused on:

- Developing a format for communicating the progress to the congregation using a variety of communication platforms.
- Serving as the communication hub for the staff and council for the project, perhaps through a email briefing so that staff know what is happening and when.
- Developing a plan for documenting the project with photo, video and stories.

I know the struggles we will deal with in the next year will be worth it when our new facility is built. I look ahead to our new building with much anticipation and excitement.

Sara



Central Lutheran Church Foundation

For the first time in the history of the Foundation, an orientation meeting was conducted in September, to provide our four new members of the Board with the information needed to equip them for their future roles as trustees. They were introduced to the Foundation's Articles of Incorporation and By-Laws. Each committee chair gave an explanation of the purpose and expectations of that committee. History, purpose and legalities were discussed and questions answered. A three-ring binder, with all of the necessary documents, was given to each new trustee.

A letter from Dave West, president of the congregation, was sent to the Foundation Board members with a request pertaining to the Central Lutheran Church Renewed Joy, Renewed Vessels capital appeal. David gave his presentation for this request at the Foundation Board meeting on December 14, 2016. The trustees approved a one percent increase in distribution, over an index based distribution rate, which at the present time is 4.75 percent. Therefore, the present distribution rate for the church is 5.75 percent. This was approved for a 3-year period, to coincide with the capital campaign calendar. If the base rate stays steady over the 3-year period, approximately \$510,000 additionally will be distributed to the church specifically for the building fund. The designated funds will also benefit from this new rate.

The Development Committee, chaired by Shirley Teig, was busy last year interviewing for a new development director. After re-interviewing two initial candidates, Inez Bergquist was hired and has been busily pursuing her business plan and working closely with the Development Committee. This committee also established a liaison function between the Foundation and Central through the senior pastor and the development director. This function will lead to better communication and understanding of each entity's purpose and role.

The Audit Committee, chaired by Kay Dixon, met with the auditors on May 10, 2017 to discuss all the particulars of the audit and to clarify various items so that changes could be made and the audit report could be finalized and distributed.

The Investment Committee, chaired by Arlan Abel, met quarterly with the investment managers, to review the investment strategy and the quarterly performance of the portfolio.

The establishment of a new Governance Committee was formed, with Joyce Anderson appointed as chair. The members of that committee immediately tackled the job of reviewing and updating the Articles of Incorporation, the By-Laws and establishing a Conflict of Interest Policy.

These documents have been amended, signed and turned over to the attorney for filing with the State of Minnesota. Committee charters were also written and completed to be added to the amended By-Laws.

Gifts from bequests, contributions and memorials, dating from June 2016 through March 2017, totaled \$58,005.

Thank you to all who give gifts to the Foundation. These gifts will continue to support the mission of Central Lutheran Church into the future for generations to come.

Present Central Lutheran Church Foundation trustees are:

Bonnie Weisenburger, president
Shirley Teig, vice president
James Heintz, secretary/treasurer
Arlan Abel
Emilie Anderson
Joyce Anderson
Kay Dixon
Scott Fisher
Larry Gregerson
Patrick Egan
Chas Scheiderer
Steve Studt

President of the congregation - ex officio
Senior pastor - ex officio (non-voting)
Business administrator - ex officio (non-voting)

Staff: Mark Gaasadelen - executive secretary

GS Investments - fund managers

Submitted by,
Bonnie Weisenburger
president

Columbarium Association



Central Lutheran Columbarium Association

COLUMBARIUM ASSOCIATION BOARD

Chuck Anderson
 Joyce Anderson
 Pr Foy Christopherson
 Christopher Haug
 Bill Masche
 Mark Peterson
 Les Rosecke
 David Sand
 Karl Starr
 David West



May 31, 2017

Columbarium Association Annual Report

The 2016-2017 program year was a busy year for our serene, contemplative and dignified space for the entombment of cremated remains of Central members and friends. We have seen growing interest in Central's columbarium this year. We observed Veterans Day, Easter Sunrise and Memorial Day in the columbarium this year. The columbarium is located at the west end of the Lower Narthex chapel, and can be visited any time the church building is open. Michael Dee is coordinator of week to week details and Pastor Christopherson serves as columbarium director.

The Central Lutheran Columbarium Association was established by the 2014 action of the congregation in annual meeting.

Columbarium Milestones

June 22, 2014	Annual Congregational Meeting founding resolution
December 9, 2014	Columbarium first unit construction completed
December 28, 2014	Columbarium dedication
January 2015	Columbarium Fund established as a stand-alone account
March 15, 2015	First entombment
144	Number of total niches in first unit
40	Number of niches reserved in total as of May 31, 2017
6	Number of entombments in this program year (June 1, 2016 - May 31, 2017)
15	Number of entombments in total as of May 31, 2017

Entombments in this program year

- + Jack Kidder
- + Jack Ellstrom
- + Elmer Frestedt
- + Laura Lavine
- + Carol Berglund
- + Delores Banks

Financial Statement - Columbarium Fund

\$28,697.55	Opening Balance
\$15,300.00	Columbarium Membership & Gifts
<u>\$1,201.00</u>	Columbarium Construction & Operation
\$42,796.55	Closing Balance

Respectfully Submitted.

Meet a member of the Columbarium Board at their display table at the annual meeting.



Nominating Committee

Central Lutheran Congregation Council Executive Committee

Current leadership (one year remaining)

David Sand: president

Dave West: past-president

Nominated for leadership (two-year term)

Sara Stensaas: president-elect

John Olson: treasurer

Pat Hansen: secretary

Current Nominating Committee (two years remaining)

Katie Brenke

Carney Bergeson-Meekins

Susan Troselius

Nominated for leadership (three-year term)

Kari Colchin

Heidi Tysk-Poppe

Joe Surla

Central Lutheran Congregation Council at-large

Current leadership (one year remaining)

Franklin Dietrich

Jim Hart

Nominated for leadership (two-year term)

Lisa Beane

Sara Gunsch

Phil Holst

Mons Teig

Audit Committee

Current leadership (one year remaining)

Jim Heintz

Nominated for leadership (two-year term)

Heruy Mesfen

Duane Hetland

2018 Synod Voting Members

Karl Evert

Lorene Gilliksen

Kris Schoephoerster

Dave West

Nominated by Congregation Council

Current Nominating Committee (one year remaining)

Andrew Heintz

Christa Olson

Bruce Nimmer



Comparative Church Statistics

Categories	2006	2011	2015	2016
Average Worship:	610	716	578	589
5:00 Saturday	43	33	54	49
8:30 am	205	193	117	104
10:30 am	343	365	364	343
Restoration Center	NA	NA	230	254
Restoration Worship	NA	NA	81	86
Summer	570	434	375	413
Lent Mid-week Avg.	289	86	132	91
Triduum	800	672	725	804
Easter Sunday	1697	1734	1623	1442
Christmas Eve	1684	1612	1768	1511
Christmas Day	295	292	201	127
Membership:				
Baptized	2465	1799	1636	1672
Confirmed	1057	1582	1382	1422
Education:				
Sunday School Average	NA	48 registered 31 average	49 registered 30 average	38 registered 25 average
Sunday Confirmation/HS Youth Average	NA	NA	21 total registered	19 registered/14 av. 14 registered/7 av. Total: 33/21
Sunday Adult Average	NA	NA	72	74
Changes:				
Baptisms	27	26	11	11
Confirmations	4	3	4	4
Weddings	16	10	13	10
Funerals	34	17	20	37
Transfers Out	64	26	6	14
Transfers In	21	50	30	69
Statistical Adjustment				

Notes:

1. Statistics were taken from congregational parochial reports to the ELCA and recorded attendance figures.
2. Average Worship reporting in the ELCA is currently based on the average for regularly held services and so does not include Christmas and Lenten worship counted in the average. The 2016 average is based on Central's previous practice for all years to include all worship services in the total and dividing by 52 weeks. For consideration, without Christmas and Lenten worship included the 2016 weekly worship average was 533 (for 2015 the adjusted average for the year was 512).
3. The worship numbers for 2016 reflect a full calendar year with three set services, no service time shift in summer. The worship averages reflect this, so too the change in average summer worship for 2016.
4. The change in worship attendance for Easter Sunday, 2016, reflects no sunrise service.
5. Restoration Center attendance is based on meals served. Worship attendance average is added this year.
6. Triduum generally includes Maundy Thursday, Good Friday and Easter Vigil worship. Previous years only include Maundy Thursday and Good Friday worship. For 2015 and 2016 Triduum includes the Vigil.
7. Information not available does not mean classes were not held, just that data is not available.



2016-2017 Historian Report

It is a great time to be the church together, living into the blessing of renewed joy! God is up to something, and our joy is rooted in deep listening and faithfully walking into God's preferred future for us as a congregation.

June 2016

19: Budget Hearing/Building Renewal Motion Meeting
25: Pastor Marissa Sotos ordained
26: Annual Meeting
The congregation approved to adopt the design concept that removes the structures known as the education building, the parish house and the south commons and replaces them with new construction to support Central's mission.

July 2016

24: Special congregational meeting for calling the new pastor for formation and care, Pastor Stephanie Friesen
26: Council Mini-retreat/Orientation: New Wine, New Wineskins
29: A Soul Feed: ELCA World Hunger Event
Pastor Marissa Sotos is called by the Minneapolis Area Synod, in relationship with the ELCA and CLC, as pastor/developer of a new mission start in the North Loop area.

August 2016

Middle School/HS Youth travel to Camp Amnicon
Kairos and Capital Appeal Team begin work
First issue of 'Centering', a quarterly publication
28: Annual Congregation Picnic

September 2016

Open Q/A Meetings (6) with Building Renewal Task Force and Kodet Architects
10-11: Homecoming Weekend: Rally around the Cross with autumn schedule resuming
11: Pastor Stephanie Friesen ordained
12: CLC Foundation appoints Inez Bergquist as director of development
25: Book Conversation: *The Good and Beautiful Life*

October 2016

1: Carolyn Diamond Organ Recital
2: Special congregational meeting to authorize Council to secure financing, to launch a Capital Appeal, and to affirm phase one design concept of the Building Renewal Project.
2: Six-week Prayer Class with Pastor Kathie Nycklemoe
5: Wednesday Evening Study with Pastor Peter – autumn: *The Good and Beautiful Community*; winter: Gospel of Matthew; spring: 1 Peter
16: 24 new members and three children received
16: VocalEssence "The Voyage" concert
23: Global Missions Sunday
29-30: "Renewed Joy, Renewed Vessels" Capital Appeal Kick-off Weekend
30: Sunday School - Bible presentation to 3yrs and Gr2

November 2016

11-12 Men's Retreat at Camp Amnicon
12-13: Sabbath to End Homelessness
13: JS Bach's Cantata 196 presented by Central Choir and Metropolitan Symphony Orchestra
19-20: Capital Appeal in-gathering, which ultimately reached the stretch goal of \$3.5 million
20: Thanksgiving Potluck
26: Downtown Interfaith Thanksgiving service at Plymouth Congregational

December 2016

2-3: Augsburg College Advent Vespers
10/11: Capital Appeal Commitment Blessing
11: Sunday School Christmas pageant

January 2017

21-22: High School Students to Camp Amnicon
27-29: Family Camp at Camp Wapo

February 2017

11: Confirmation Students to Camp Chi Rho
26: 26 new members, one adult candidate for baptism and four children received

March 2017

Lenten Theme: "Welcomed and Fed" with Martin Luther's *Small Catechism* study on Sundays and Small Groups meeting throughout Lent
4: Prayer Retreat led by Pastor Kathie Nycklemoe
14: Homeless Day on the Hill
19: National Lutheran Choir Winter Concert
22-24: Trinity Institute 2017: *Water Justice* webcast gathering

April 2017

Building Renewal Project update meetings (3)
2: Metropolitan Symphony Orchestra concert
9: "Mater Dolorosa: An Evensong for Holy Week" with Central Lutheran and Augsburg College choirs, and the Metropolitan Symphony Orchestra
13-16: The Great Three Days, Easter Sunday
29: Camp Amnicon "Packs and Paddles" fundraiser
29-30: Appreciation and Acknowledgement Weekend

May 2017

Restoration work begins on stained glass windows
Removal of old sound speakers/installation of new digital speakers and sound system
7: Four CLC young people confirmed
13: Mother/Daughter/Sister/Friend Breakfast
21: 8 new members welcomed



Camp Amnicon

Since December of 2016 it has been my pleasure to serve as Camp Amnicon's interim executive director. Certainly the past year has begun a time of transition for Camp Amnicon.

Last summer marked the end of Alana Butler's long service to Amnicon. Camp transitions, particularly after a long term, can be awkward, sometimes downright painful. What should not be lost is all the good things that have been born through Amnicon in the last 25 years under Alana's leadership. In my short time at Amnicon, I have become very aware of Alana's great heart for ministry, especially in her compassion for kids at risk. I am also thankful for the number of people who continue to pray for her in this time of transition for her as well as for Amnicon.

At the same time, it is my experience that Amnicon continues to be a great place, a place that offers unique experiences which continue to change lives. I have also been pleased with the hard work and competence of the present staff.

Brad and Hannah Damon, along with Leah Damon and Audrey Dontje Lindell, have done a great job of getting ready for summer. The summer staff is hired and began staff training at the end of May to prepare for the 34 adventure trips scheduled (up slightly from last summer.)

While Amnicon is no longer officially part of Central Lutheran, so much of the leadership and energy and support (and love) comes through Central. It was very gratifying to experience that at the recent Packs and Paddles event. It has been even more gratifying to see the people from Central who continue to use Amnicon as a place of renewal.

Of course the challenge going forward for any camp, particularly a camp birthed by a single congregation, is to continually be developing programs which serve a constantly changing landscape. During the next months we will have a task force looking at that issue in a formal way. It will involve examining the core of Amnicon's ministry to this point. Moreover, it will examine where we need to go and who can be best served in the future.

Naturally, one of the hopes is to create a sustainable future for a truly unique place.

In just a few months, I have come to describe that uniqueness in a couple of ways. First, I have described Amnicon as "remarkably inconvenient" and have observed that therein lies the true charm of the place. We in this world need wild places, places that bring us close to the earth, places that teach us the value of working together,

places that take us away from our dependence on things rather than each other. Amnicon does that.

Second, I have come to believe that Amnicon should remain a "far flung" place, one that invites us to explore. Amnicon's adventure programs do offer that to groups and individuals in a marvelous way. I have often said that adventure camping is never really about camping. It is not simply canoeing or developing outdoor skills. Camping done well invites one to explore the question of vocation. It asks the question, "so what is God calling me to do with the rest of my life?" In my short time, I have gotten a glimpse of what Amnicon has done to inspire people as they return from their experience in a far flung place.

Thank you for all you continue to do to support the ministry through Camp Amnicon.

Jeff Barrow



Bishop Ann Svennungsen



**Minneapolis
Area Synod**

Evangelical Lutheran
Church in America

122 W Franklin Ave., Ste. 600
Minneapolis, MN 55404-2474
612-870-3610 · www.mpls-synod.org

Dear Friends in Christ,

At a recent gathering of retired pastors, I asked participants to share the names of their home congregations. After all the introductions, I noticed that every congregation named was one I would love to attend—where the Gospel is proclaimed and the community is real.

Nothing gratifies a bishop more than seeing the vibrancy of the synod's congregations. Our most important goal as a synod staff is to support and nurture life-giving communities of faith. And, yet, we all know that a healthy congregation doesn't just magically appear; it is a miraculous coming together of gifts, talents, leaders, love, and openness to the spirit. When a synod is filled with such communities, our joy is clear, our gratitude is deep. Thank you for being communities where lives are healed and transformed through the Gospel shared in Word, Sacrament, and beloved community.

In addition to our 147 congregations, the synod has three new mission starts: Tapestry in Richfield, Intertwine in Northeast Minneapolis, Tree of Life in the North Loop. We have 268 pastors and deacons serving congregations (including 10 whom I was privileged to ordain in 2016), 71 serving in specialized ministries such as chaplaincy, and 326 who are now retired and rostered in our synod.

Much of the synod's work focuses on *leaders*. We actively look for faithful pastors and deacons to serve in our synod. We *support* leaders through mentoring, peer groups, theological and spiritual growth. We provide resources for elected congregational leaders, especially through our staff's commitment to offer wise and swift responses to the many resource requests we receive each day.

The members of our synod staff spend much of their time in congregations—preaching, installing new pastors and deacons, and providing leadership in times of transition: staff changes, call processes (of which our synod had 34 in 2016), conflict situations, and strategic planning. We also foster *connections* among ministries and congregations, believing we are stronger together. Our relationships with our companion synods continue to flourish. Next month I travel to Nigeria for the installation of the new Archbishop of the Lutheran Church of Christ in Nigeria, the Rev. Musa Filibus. In May, I will be in Leipzig for Germany's premiere observance of the 500th Anniversary of the Reformation.

We also have a distinctive focus on worship. We both host and provide funding for the Center for Worship and Music, led by Jay Beech, which "fosters imagination and creativity to make worship innovative and meaningful in every time and culture." I invite you to its website: worshipandmusic.org.

Our commitment to the care of creation grows – and we delight in the efforts of our synod's EcoFaith Network. Together, we worked to pass a resolution at the 2016 ELCA Churchwide Assembly that will provide resources so every congregation knows the watershed district in which it is located.

At our 2016 synod assembly, we passed a resolution asking each congregation to develop a mission statement on racial justice and appoint a person to serve as racial justice liaison with the synod.

During that same assembly we approved a synodical capital campaign feasibility study in conjunction with the ELCA churchwide campaign. Depending upon the study results, your synod council will decide whether to launch a campaign. The focus will be on raising resources for those urgent mission priorities that we can only do as church together.

We struggled some financially in FY 2015-16, receiving only 94% of our anticipated mission support from congregations. This meant that churchwide received 94% of what our synod pledged – and the synod operated on 94% of budget. We are especially grateful to all who have faithfully supported the synod and churchwide through their benevolence for FY 2016-17.

Thank you for the incredible privilege of serving as your bishop. I have such a deep sense of calling to this work, such profound gratitude for the Minneapolis Area Synod, and such love for the Gospel-centered, thoughtful, and welcoming work we do as the ELCA. Please let us know how we can serve one another better – working together so all experience *gracious invitation* into *life-giving Christian community* and live in *just and healthy neighborhoods*.

Bishop Ann Svennungsen



Building Renewal Task Force

It hardly seems possible, but the Building Renewal Task Force held its first meeting in June 2015. That fall, the Building Renewal Task Force developed objectives to guide the process and interviewed architects, selecting Kodet Architectural Group, Ltd., in December of 2015. From January-March of 2016, the team reviewed three renovation/tear down options and their financial implications. A complete tear down of the education building, parish house and south commons and replacing them with a completely new addition was recommended as a design path at the annual meeting in June 2016 and was affirmed by a 93% vote.

The team spent the summer of 2016 working with Kodet on a preliminary budget and initial design concepts. The results of this work were presented for approval at a special congregational meeting in October 2016. The adopted budget framework of \$9,500,000 meant that choices had to be made in the design process. As the design and budget process were refined, the team was gratified that the essentials of the original design were achievable within the adopted budget. Further, the many, many daily challenges presented by the current facility will be addressed by the new facility.

Budget realities, however, required some reworks. First, the proposed unfinished second floor became too expensive to build. The team became less interested in unfinished space when too many questions emerged to the timing of completion and the cost. With the option of moving the functions of that space to phase two, blessings emerged—a chapel on-grade, with a separate entrance, and a presence facing the convention center. Second, the lower level footprint had to be reduced. This means less storage but more creative use of space. The pouring of a concrete floor in the sandpit will take care of that nearly 100-year-old problem space and provide additional storage space. Third, the fellowship hall ceiling had to be reworked, which gained a better-looking roofline while retaining the windows to look back at the historic church. Finally, cost constraints meant that the south entrance had to be reworked. The outcome is a cleaner look with skylights that will still bring in light. The new facility will be a one-story addition. In the past couple of months, the team worked on interior finishes and details.

Beginning in late summer 2016, we, along with Kodet, attended numerous meetings with various departments of the City of Minneapolis, especially, Land Use, Design and Preservation and Construction Code Services as well as Transportation Planning and Programming. The process has been long and at times arduous. The first step was getting permission from the Historic Preservation Commission to demolish the education building, parish

house and south commons. The Commission agreed with Central that these structures did not meet the criteria for historic buildings. We also met with the Citizens for a Loring Park Community and the Elliot Park Neighborhood. Both groups voted to support Central's proposed building plan. Finally, on May 22, Central's building plan was approved by the Minneapolis Planning Commission. On June 16, the plan will be before the City Council for approval. Once approval is granted, Central can go out for bids and apply for demolition and building permits. Assuming all goes according to plan, we should be able to begin demolition in August.

I want to recognize the faithful work of the Building Renewal Task Force members who met every other week for two years and thank them for their work. The task force members are: Hazel Reinhardt, chair, Kari Lyle, Franklin Dietrich, Paul Troselius, Ron Fiscus, Kevin Lile, David West, Dave Rodriguez, Pastor Peter, Pastor C and Pastor Melissa.

Hazel Reinhardt, chair



Financials: Assets and Liabilities

Assets and Liabilities Consolidated Funds

	5/31/17	5/31/16	5/31/15
OPERATING:			
Checking Account	\$127,532	\$132,106	\$107,857
Savings Account	\$225,101	\$200,000	\$0
Youth Account	\$1,206	\$0	\$0
Due From Designated Account	\$0	\$0	\$3,785
TOTAL OPERATING ASSETS	\$353,839	\$332,106	\$111,642
 BUILDING & CAPITAL CAMPAIGNS:			
Checking Account	\$593,591	\$1,000	\$2,188
Savings Account	\$0	\$0	\$0
MIF Demand Investment	\$100	\$0	\$0
Land	\$1,229,389	\$1,229,389	\$1,229,389
Building	\$12,250,148	\$12,250,148	\$12,250,148
Equipment	\$776,925	\$776,925	\$776,925
Other Fixed Assets	\$1,087,349	\$1,087,349	\$1,087,349
TOTAL BUILDING & CAPITAL CAMPAIGNS ASSETS	\$15,937,502	\$15,344,811	\$15,345,999
 DESIGNATED FUNDS (RESTRICTED)			
Checking Account	\$275,484	\$288,135	\$106,690
Funds Invested-ELCA	\$62,729	\$62,037	\$63,019
Life Insurance-Cash Surrender Value	\$22,017	\$22,017	\$22,017
Due to Operating Account	\$0	\$0	-\$3,785
Investments	\$172,245	\$171,088	\$188,327
TOTAL DESIGNATED FUNDS ASSETS	\$532,474	\$543,277	\$376,268
 COLUMBARIUM			
Checking Account	\$45,239	\$28,698	\$15,414
 TOTAL ASSETS	 \$16,869,054	 \$16,248,891	 \$15,849,323
 OPERATING			
Current Liabilities	\$0	\$0	\$0
Bank Line of Credit	\$0	\$0	\$0
 BUILDING & CAPITAL CAMPAIGNS			
Note Payable-Mission Investment Fund	\$649,612	\$752,027	\$951,255
 DESIGNATED FUNDS (RESTRICTED)			
Obligations	\$534,249	\$521,260	\$376,268
 TOTAL LIABILITIES & OBLIGATIONS	 \$1,183,861	 \$1,273,287	 \$1,327,523
 NET ASSETS	 \$15,685,193	 \$14,975,604	 \$14,521,800



Proposed Budget

Ministry & Congregational Life

	Proposed Budget 2017-18	2016-2017 Budget	2016-17 Actual
Revenues			
Regular Offering	\$1,200,000	\$1,225,000	\$1,175,806
Kitchen Cash Receipts	\$25,000	\$25,000	\$22,970
Estate Gifts	\$0	\$0	\$27,913
Donor Designated CYF	\$40,000	\$40,000	\$41,000
Donor Designated Health Care	\$2,000	\$2,000	\$2,000
Donor Designated Seniors	\$25,000	\$35,000	\$35,000
Donor Designated Seminarians	\$2,000	\$12,000	\$12,000
Donor Designated Saturday Services	\$0	\$3,000	\$3,000
Donor Designated Instrument Maintenance	\$4,000	\$4,850	\$4,850
Donor Designated Congregational Events	\$2,000	\$6,500	\$10,500
Interest/Investment Revenue	\$0	\$0	\$2,431
Ministry & Congregational Life Revenue	\$1,300,000	\$1,353,350	\$1,337,470
Expenses			
ELCA Churchwide Partnership	\$54,000	\$52,000	\$52,000
ELCA South Sudan Mission	\$10,000	\$10,000	\$10,000
Young Adults Global Mission (YAGM)	\$8,000	\$4,000	\$4,000
Luther Seminary CPL	\$15,000	\$12,400	\$14,727
Lutheran Healthcare Bangladesh	\$10,000	\$7,600	\$7,600
WMPL-Mikaelsen	\$0	\$2,600	\$2,600
China Service Ventures	\$7,000	\$6,600	\$6,600
Wycliffe-Follingstad	\$10,000	\$10,000	\$10,000
Wycliffe-Gaultney	\$10,000	\$10,000	\$10,000
Lutheran Campus Ministry	\$2,000	\$0	\$0
Reconciling Works	\$1,000	\$0	\$0
Extraordinary Lutheran Ministries	\$1,000	\$0	\$0
Camp Amnicon	\$5,000	\$5,000	\$5,000
Total Mission Emphasis (Benevolence)	\$133,000	\$120,200	\$122,526
Worship Life Ministry	\$18,500	\$17,500	\$21,948
Music Ministry	\$33,700	\$34,550	\$31,540
Children/Youth/Family Ministry	\$24,400	\$24,400	\$24,494
Adult Education	\$2,500	\$2,500	\$3,656
GLBT Ministry	\$1,250	\$1,250	\$559
Pastoral Care Ministry	\$3,000	\$3,000	\$580
Prayer Life Ministry	\$3,700	\$2,300	\$4,981
Welcome Life Ministry	\$7,000	\$3,500	\$8,626
Fellowship Ministry	\$10,000	\$7,250	\$13,285
Kitchen Ministry	\$21,000	\$21,000	\$28,855
Faith & Finance Ministry	\$1,000	\$1,000	-\$6
Shared Ministry	\$250	\$250	\$0
Community Ministry	\$5,000	\$4,500	\$2,732
Global Mission Operations	\$2,000	\$2,000	\$1,537
Ministry Disbursements	\$133,300	\$125,000	\$142,786

Proposed Budget, continued

Administration	\$112,200	\$112,800	\$129,149
Council & Committees	\$5,400	\$3,900	\$7,476
Communications	\$10,300	\$9,500	\$10,466
Banking, Legal, and Audit	\$24,000	\$24,500	\$24,049
Personnel	\$977,077	\$951,632	\$950,297
Congregational Life Disbursements	\$1,128,977	\$1,102,332	\$1,121,437
Ministry & Congregational Life Revenue	\$1,300,000	\$1,353,350	\$1,337,470
Ministry & Congregational Life Expenses	\$1,395,277	\$1,347,532	\$1,386,749
Ministry & Congregational Life Surplus (Deficit)	-\$95,277	\$5,818	-\$49,279

Foundation & Facility Proposed Budget 2017-18 2016-2017 Budget 2016-17 Actual

Foundation Revenue			
Foundation Revenue	\$698,118	\$674,000	\$661,927
Facility Expenses			
Building Operations	\$126,250	\$161,000	\$149,575
Utilities	\$75,000	\$127,500	\$121,064
Debt Expense	\$139,000	\$205,872	\$129,226
Temporary Expenses during construction	\$96,000	\$0	\$8,617
Personnel	\$174,293	\$192,171	\$182,294
Total Facility Expenses	\$610,543	\$686,543	\$590,843
Foundation & Facility Surplus (Deficit)	\$87,575	-\$12,543	\$71,085

Events Proposed Budget 2017-18 2016-2017 Budget 2016-17 Actual

Revenues			
Building Usage Revenue	\$45,000	\$45,000	\$46,422
Weddings and Funerals	\$0	\$0	\$24,857
Total Event Revenues	\$45,000	\$45,000	\$71,279
Expenses			
Personnel	\$58,175	\$37,678	\$40,753
Staff Compensation for Weddings	\$0	\$0	\$9,774
Staff Compensation for Funerals	\$0	\$0	\$13,531
Extra Compensation for Events	\$0	\$0	-\$292
Contract Security	\$1,500	\$1,500	\$1,950
Total Event Expenses	\$59,675	\$39,178	\$65,716
Surplus (Deficit)	-\$14,675	\$5,822	\$5,562



Proposed Budget, continued

Parking, Neighborhood, & Security

Proposed Budget

2017-18 2016-2017 Budget 2016-17 Actual

Revenues

Parking Fee Net Revenue	\$475,000	\$437,500	\$434,836
Total Parking Revenues	\$475,000	\$437,500	\$434,836

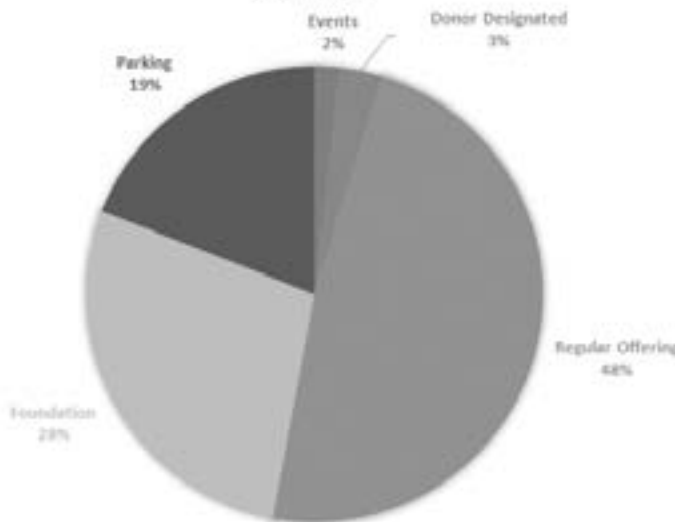
Expenses

ELCA Mission Start (North Loop)	\$20,000	\$20,000	\$20,000
Lutheran Social Services	\$5,000	\$5,000	\$5,000
Downtown Cong to End Homelessness	\$6,000	\$6,000	\$6,000
Augsburg College	\$6,000	\$6,000	\$6,600
Total Mission Emphasis (Benevolence)	\$37,000	\$37,000	\$37,600

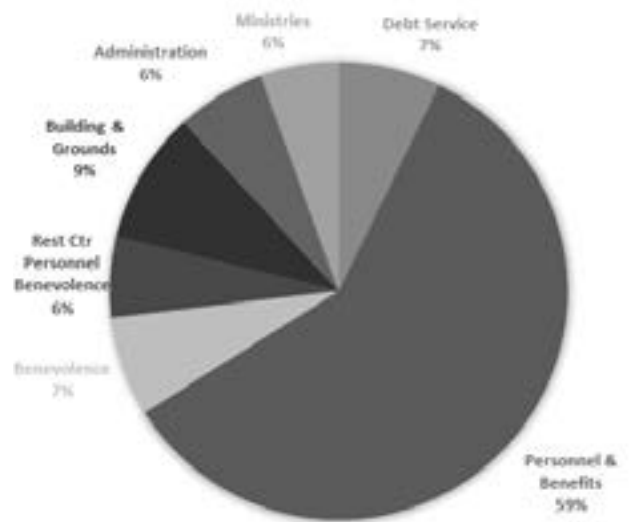
Parking Lot & Snow Removal	\$25,000	\$31,000	\$17,619
Parking Lot Automation Debt Service	\$35,000	\$0	\$0
Personnel	\$345,938	\$357,379	\$377,526
Parking, Neighborhood, & Security Total Expenses	\$442,938	\$425,379	\$432,745
Surplus (Deficit)	\$32,062	\$12,121	\$2,091

Total Revenue All Funds	\$2,518,118	\$2,509,850	\$2,505,512
Total Disbursements All Funds	\$2,508,433	\$2,498,631	\$2,476,053
Surplus (Deficit)	\$9,685	\$11,219	\$29,458

REVENUES



DISBURSEMENTS





Designated Fund Summary

Designated Fund Summary

June 2016 to May 2017

Description	Beginning Balance	Revenue	Expenses	Ending Balance
Facility				
Lower Narthex Access Fund	\$13,604	\$0	\$13,604	\$0
Debt Reduction	\$198	\$10,930	\$11,128	\$0
Capital Replacement/Building Fund	\$187,388	\$276,006	\$241,145	\$222,249
Caring for Creation	\$793	\$0	\$0	\$793
Kitchen Fund	\$1,642	\$1,300	\$2,042	\$900
Bell Tower	\$711	\$0	\$711	\$0
Gardening Corps	\$1,586	\$1,577	\$2,747	\$416
Accessible Seating	\$1,023	\$0	\$1,023	\$0
Digital Sign Fund	\$20,355	\$0	\$10,420	\$9,935
Total Facility	\$227,299	\$289,813	\$282,818	\$234,293
Ministry Teams				
Music Ministry				
Music Cantatas & Trips	\$45,595	\$14,945	\$26,199	\$34,342
Instrument Maintenance	\$7,003	\$294	\$7,297	\$0
Organ Fund	\$31,214	\$50	\$0	\$31,264
Downtown Music Festival-2015	\$3,007	\$0	\$1,000	\$2,007
Music Commission	\$0	\$10,000	\$0	\$10,000
Total Music Ministry	\$86,820	\$25,289	\$34,496	\$77,613
Local Outreach				
Collegeville Institute	\$1,535	\$517	\$2,052	\$0
Community Ministry	\$35,784	\$144,229	\$123,596	\$56,417
Community Meals	\$0	\$36,604	\$36,604	\$0
Total Local Outreach	\$37,319	\$181,350	\$162,252	\$56,417
Global Outreach				
Global Missions	\$2,776	\$6,469	\$0	\$9,245
Mission Support	\$4,004	\$7,459	\$5,663	\$5,800
World Mission Builders	\$1,515	\$0	\$1,515	\$0
ELCA World Hunger	-\$120	\$410	\$0	\$290
ELCA Disaster Relief	\$250	\$0	\$0	\$250
Total Global Outreach	\$8,424	\$14,339	\$7,178	\$15,585

Designated Fund Summary, cont'd

Description	Beginning Balance	Revenue	Expenses	Ending Balance
CLC Member Ministries				
Senior Adult Ministry	\$27,788	\$45,936	\$60,426	\$13,298
Library Reserve	\$8,429	\$0	\$40	\$8,389
Fine Art Acquisition	\$19,117	\$100	\$75	\$19,142
CYF	\$33,777	\$34,750	\$44,500	\$24,028
Prayer Shawls	\$1,100	\$25	\$0	\$1,125
Heritage Team	\$0	\$0	\$260	-\$260
Camp Amnicon Designated	\$900	\$0	\$100	\$800
Men's Fellowship	\$921	\$0	\$0	\$921
Ushers	\$737	\$20	\$0	\$757
Hannah Grinde Memorials	\$1,227	\$100	\$0	\$1,327
Undesignated Memorials	\$2,115	\$8,644	\$0	\$10,759
Sem Scholarships (Hanson & others)	\$11,765	\$2,594	\$12,250	\$2,109
Linda Ahlberg Memorial	\$1,246	\$0	\$0	\$1,246
Central Nursing (Ward & others)	\$5,901	\$2,708	\$5,237	\$3,372
Peace & Justice Forums	\$2,544	\$300	\$500	\$2,344
Central Quilters	\$240	\$40	\$82	\$198
Centennial Quilt Project	\$1,000	\$0	\$0	\$1,000
Saturday Night Worship	\$2,727	\$2,107	\$10,269	-\$5,434
Total CLC Member Ministries	\$121,535	\$97,325	\$133,739	\$85,121
Total Ministry Teams	\$254,098	\$318,302	\$337,665	\$234,736
Events				
100th Anniversary Fund	\$115	\$0	\$0	\$115
Congregational Events	\$12,672	\$0	\$10,500	\$2,172
Wedding Deposits	\$2,550	\$4,800	\$2,900	\$4,450
Total Events	\$15,337	\$4,800	\$13,400	\$6,737
Temporary Holding Accounts				
Undesignated Bequests	\$0	\$54,708	\$54,708	\$0
Maint & Sec Staff Discretionary	\$4,390	\$733	\$0	\$5,123
Due TO operating account	\$0	\$7,184	\$7,184	\$0
Service of Remembrance	\$423	\$0	\$0	\$423
Halverson Benefit	\$12,515	\$256	\$12,771	\$0
Website Develop Holding Acct	\$15,000	\$0	\$15,000	\$0
Ordination offering	\$0	\$401	\$401	\$0
LSS Refugee Support	\$0	\$920	\$0	\$920
Foundation Carryover	\$0	\$30,000	\$0	\$30,000
Total Temporary Holding Accounts	\$32,327	\$94,203	\$90,065	\$36,466
Total Designated Funds	\$529,061	\$707,118	\$723,948	\$512,232



Building Renewal Financials

**Building Renewal Revenue & Expense
Since Inception
Total Pledges \$3,500,000**

Building Renewal Revenues

Capital Fund Drive	\$1,492,804
Foundation Support	\$71,310
Prior Designated Funds	\$16,669
Memorials	\$4,595

Total Revenues **\$1,585,377**

Building Renewal Expenses

Architect Fees	\$532,884
Environmental Costs	\$19,734
Survey	\$16,255
Bldg Renewal Legal Fees	\$5,989
Capital Campaign Expenses	\$88,525
Mortgage Closing Costs & Fees	\$4,402
City Permits	\$3,588
Stained Glass Restoration	\$129,980
Sanctuary Sound & Light	\$175,368
Sanctuary Transition/Operations	\$13,289

Total Expenses **\$990,014**

Net Total **\$595,363**

What Is This Place



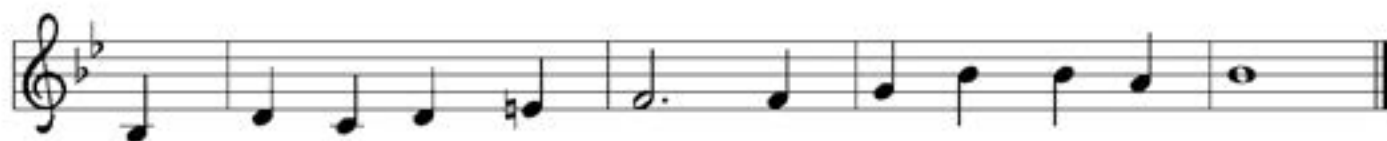
1 What is this place where we are meet - ing? On - ly a house, the
2 Words from a - far, stars that are fall - ing, sparks that are sown in
3 And we ac - cept bread at this ta - ble, bro - ken and shared, a



earth its floor. Walls and a roof shel - ter - ing peo - ple,
us like seed: names for our God, dreams, signs and won - ders
liv - ing sign. Here in this world, dy - ing and liv - ing,



win - dows for light, an o - pen door. Yet it be - comes a bod - y that lives
sent from the past are all we need. We in this place re - mem - ber and speak
we are each oth - er's bread and wine. This is the place where we can re - ceive



when we are gath - ered here, and know our God is near.
a - gain what we have heard: God's free re - deem - ing word.
what we need to in - crease: our jus - tice and God's peace.

Text: Huub Oosterhuis, b. 1933; tr. David Smith, b. 1933

Music: KOMT NU MET ZANG, A. Valerius, *Nederlandsch Gedenckclanck*, 1626

Text © 1967 Gooi en Sticht, BV, Baarn, The Netherlands, admin. OCP Publications. All rights reserved.

Duplication in any form prohibited without permission or valid license from copyright administrator.



Central Lutheran
MINNEAPOLIS

Exploring the promise of God for all
333 South 12th St, Minneapolis, MN 55404
612-870-4416 | centrallmpls.org